

PREPARED BY

TECH BULLETIN
SPRING-BRAKE / CENTER ADAPTER
Clarification of Cosmetic Imperfection

This notice is intended to clarify a visual [mark] that can occasionally appear on the surface of our spring-brake aluminum center adapters. Including OEM's. Fig-1

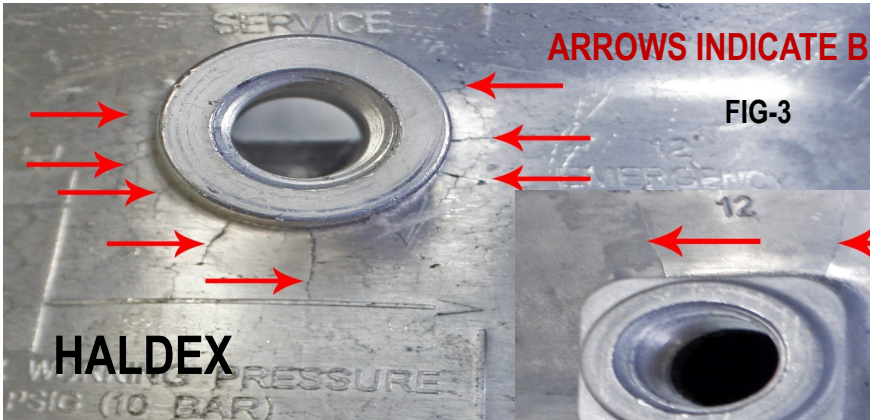


THIS [MARK] IS A CHARACTERISTIC THAT IS TYPICAL OF ALL ALUMINUM CENTER ADAPTERS AND IN NO WAY IMPACTS THE DESIGNED STRENGTH OF THE ADAPTER. THESE ARE NORMAL [MARKINGS].

In Fig-2, you can see a magnified view of this CHARACTERISTIC. Which, in fact, is caused by a simple surface scratch in the mold. When the aluminum casting is removed from the mold this scratch causes a tiny amount of excess or build-up of aluminum that mirrors the scratch from the mold.



In Fig-3 / 4, you can see that these [markings] are common to all ALUMINUM CENTER ADAPTERS as evidenced by the two OEM-sample photos below...



ARROWS INDICATE BUILD-UP OF EXCESS ALUMINUM

